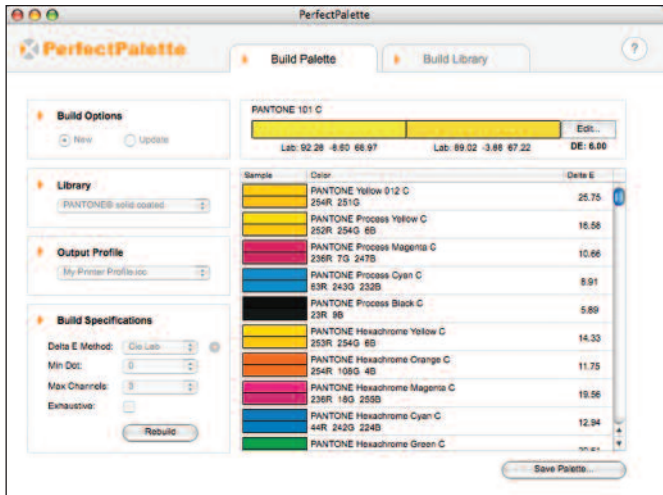


# PerfectPalette™

Optimize spot color reproduction for your output devices



Device recipe optimization allows users to choose:

- $\Delta E$  CIE
- $\Delta E_{94}$
- $\Delta E_{2000}$
- $\Delta C$  CMC matching method

This enables you to:

- minimize visual color differences
- select the max number of output channels to minimize ink usage
- specify minimum output device color values to optimize for device capabilities

## Minimum System Requirements:

### Windows

Windows Pentium PC or faster processor  
Microsoft Windows 2000/XP  
(note – this version of PerfectPalette will not run on the new 64-bit version of Windows XP)

### Mac

Macintosh Power PC Processor  
Mac OS X version 10.2 or higher  
24 MB of available RAM  
25 MB of available hard-disk space

Visit [xrite.com](http://xrite.com) for more information

© 2006, X-Rite, Incorporated  
X-Rite is a registered trademark of X-Rite, Incorporated.  
All other registered trademarks are properties of their respective owners.

PerfectPalette creates high-quality custom color palettes for both user-defined and industry standard color libraries such as PANTONE® Color Guides. PerfectPalette provides all the tools to build and reproduce your spot colors using either direct measurement, or by numerical specification. PerfectPalette's optimization technology uses your ICC output profiles to go beyond color management and ensure the closest possible match to your original spot colors.

Optimized values can be fine-tuned to user preference — using both a visual color preview and numeric values — ensuring that PerfectPalette delivers the exact results that you want.

PerfectPalette color palettes are compatible with the Adobe Creative Suite®, Fuji FinalProof GxT, Mac OS X Color Picker, and any application that supports ICC Named Color Profiles.

Use PerfectPalette to optimize the color reproduction of all your spot colors — including both custom-built and PANTONE color libraries. Take advantage of your own ICC profiles and harness their value through PerfectPalette's advanced color engine. PerfectPalette and your ICC profiles deliver the highest color matching performance for all your spot colors.



L11-191 (01/06)